

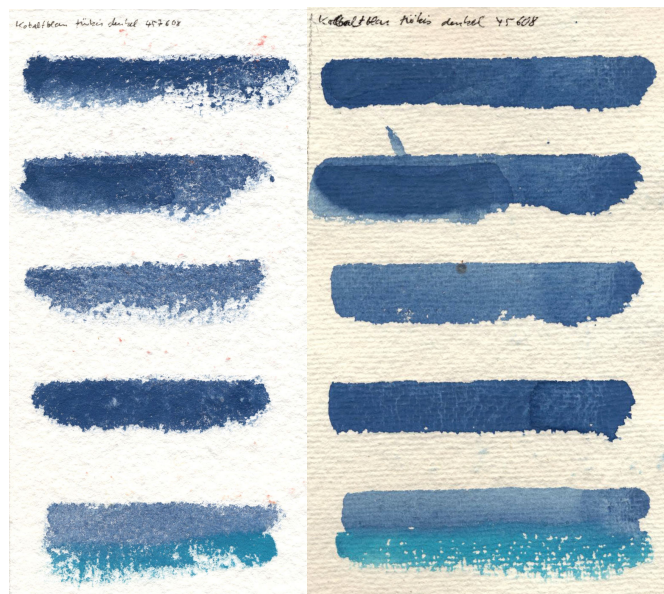
#457608 Cobalt Blue Turquoise Dark

Cobalt blue turquoise dark is a matte blue with a tendency towards green. The color is similar to Zirconium Cerulean Blue (#454008), but is much darker, stronger, and less chalky in the liquid state. On handmade paper and cotton rag paper, the color is noticeably darker than on hot-pressed or rice paper. Especially on hot-pressed paper, the color remains transparent even with multiple applications and has a very homogeneous surface. Drying marks can hardly be observed.

The mixture was created together with #457508 Cobalt Blue Turquoise Light (lowest color application in each case).

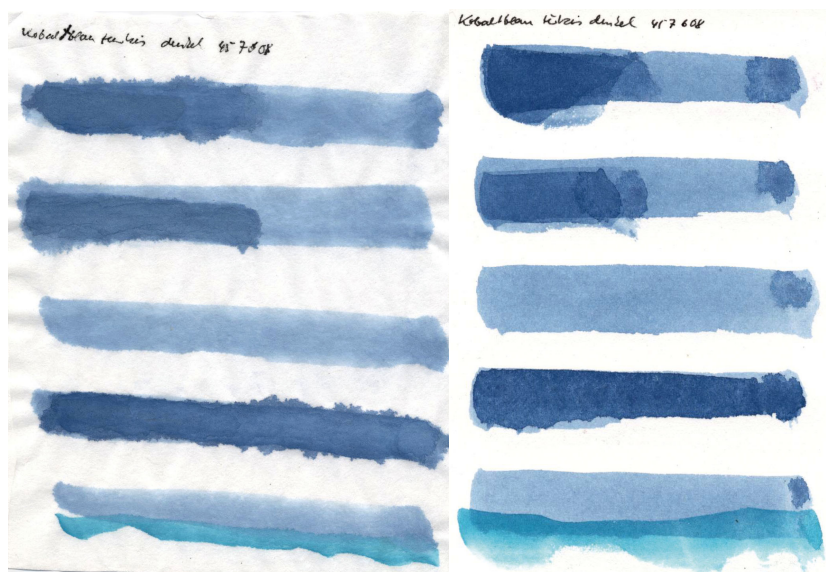
Hand-made Paper

Cotton Rag Paper



Chinese Rice Paper

Hot Pressed Paper



Influence and properties of painting surfaces

The "colorfulness" or character of a pigment is influenced not only by the different binders; a significant expression is also created by the different textures of the various painting surfaces.

For example, glazing pigments appear even more "transparent" on rice paper and seem to become "one" with the painting surface. On canvas, regular or hand-made paper, on the other hand, they appear more solid and stable.

Properties of hand-made paper (German: Büttenpapier)

- Low density
- Soft, velvety
- Voluminous, full-bodied
- Firm, stable
- Absorbs a lot of water and the color penetrates deeply

Properties of Chinese rice paper

- Dissolves with "too much" water
- Transparent (as a result, the light behind the painting surface has different effects on the paint application)
- The paint soaks through the paper and is highly runny
- practically untextured

Properties of cotton rag paper

- "woven" paper with regular, tiny corrugation
- slightly shimmery effects
- The color seems to move
- Clear texture

Properties of hot pressed paper

- Certain firmness and rigidity (less flexible)
- Clear lines and contours
- Smooth, dense surface
- Less absorbent, color penetrates less into the paper and runs more evenly
- Less "shadow" due to lack of texture